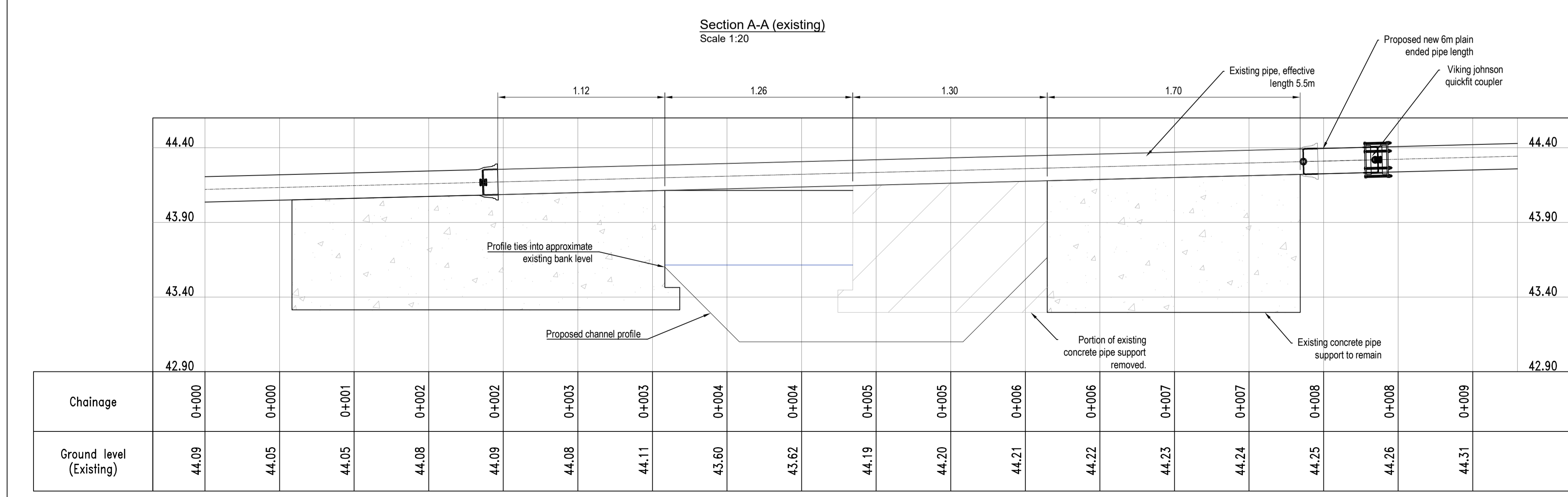
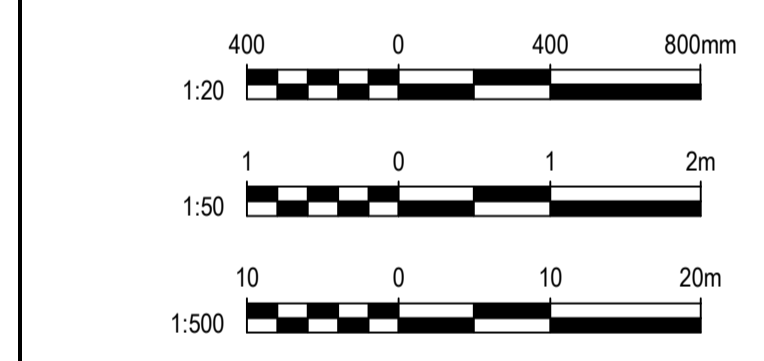
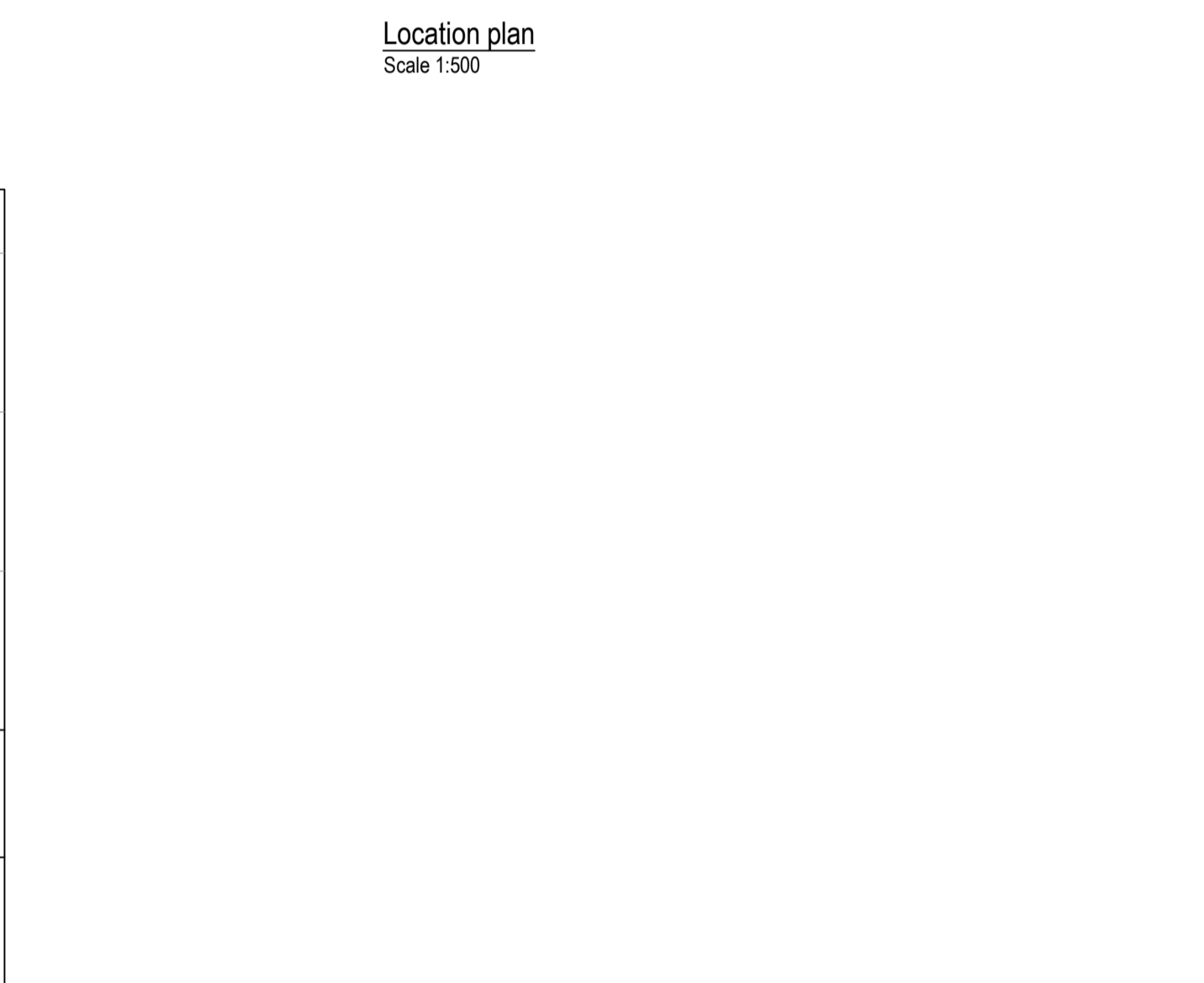
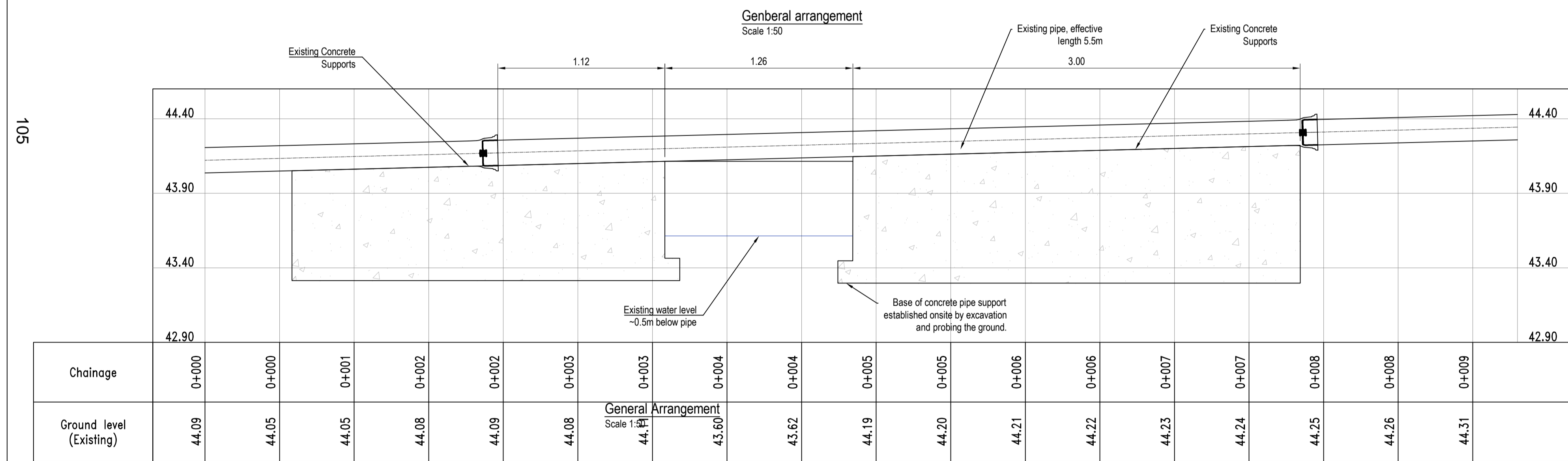


IF YOU HAVE A QUERY CALL US
SCALING FROM THIS DRAWING OR OBTAINING DIMENSIONS ELECTRONICALLY MAY NOT PROVIDE ACCURATE INFORMATION AND SHOULD BE AVOIDED. WORK ONLY FROM FIGURED DIMENSIONS.

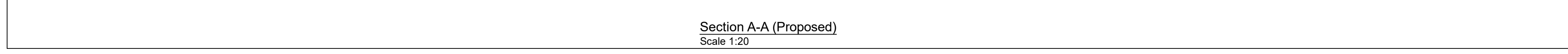
NOTES:
1. This drawing is to be read in conjunction with all relevant Architects, Engineers and Specialists drawings together with the specification.

- Existing Potable Water Main
- Storm / Highways Drainage
- Thames Water Foul Sewer
- Underground Electric Cables (LV)
- Overhead Electric Cables (LV)
- Underground HV Electric Cables
- Gas main
- BT overhead cables
- BT underground cables

- Safety Health and Environmental Information**
In addition to the hazards/risks normally associated with the types of work detailed on this drawing, note the following:
- Construction**
- WORKING WITH WATER - RISK OF DROWNING
 - CONFINED SPACES (MANHOLES)
 - INTERFACE WITH SEWERS - LEPTOSPIROSIS / WEILS DISEASE
 - DUST - (CUTTING CONCRETE)
- Maintenance/Cleaning/Operation**
- CONFINED SPACES
 - INTERFACE WITH SEWERS - LEPTOSPIROSIS / WEILS DISEASE
- Decommissioning/Demolition**



- Anticipated construction sequence;**
1. Setup overpumping between manholes,
 2. Cut out existing pipe section and remove pipe
 3. Cut out concrete support for extent shown
 4. Install new plain ended pipe & VJ coupler to re-instate sewer pipe
 5. Remove over-pumping arrangement and return to service.



A	1ST ISSUE	30.05.22
REV	REVISION DETAILS	DATE

Ghyston Engineering Ltd
5 FURZE ROAD, FISHPONDS, BRISTOL, BS16 4HR
TEL : 0117 325 0745
email : Alex@GhystonEngineering.co.uk

THIS DRAWING IS THE COPYRIGHT OF GHYSTON ENGINEERING LTD AND MUST NOT BE COPIED, REPRODUCED OR SUBMITTED TO OTHER PARTIES WITHOUT THEIR PERMISSION.

PROJECT TITLE
EMM BROOK RIVER RESTORATION

DRAWING TITLE
SECOND SEWER CROSSING LAYOUT AND SECTIONS

CLIENT
SOUTH EAST RIVERS TRUST

STATUS
INFORMATION

SCALE	DRAWN	CHECKED	APPROVED
AS SHOWN	AT A1	#A.M.H	11
DRG SIZE	DRAWING NUMBER	REV	
A1	GHY-SERT-04-DWG-25	A	

This page is intentionally left blank